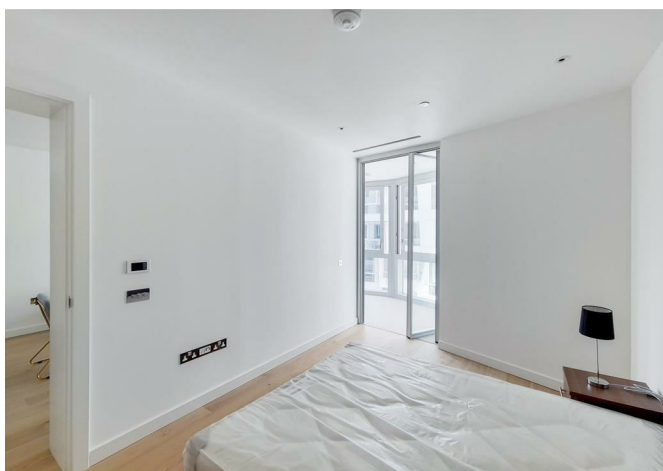
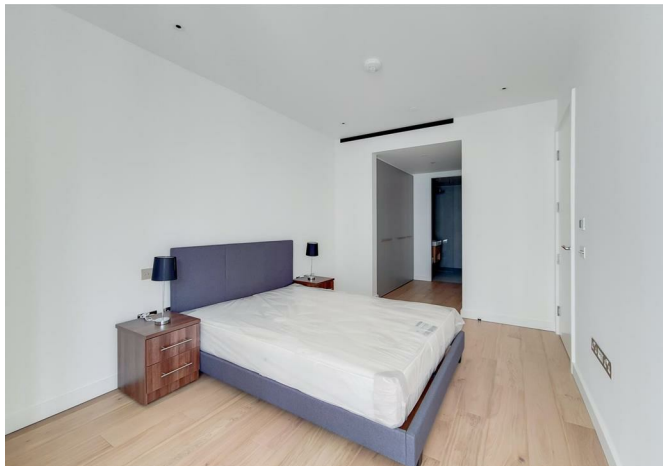




Apartment 901 Pico House 2 Prospect Way, London, SW11 8DL  
£1,100 Per Week



## Apartment 901 Pico House 2 Prospect Way, London, SW11 8DL

**£1,100 Per Week**

Situated within this highly sought-after development with stunning river views the property boasts modern city living at its best.

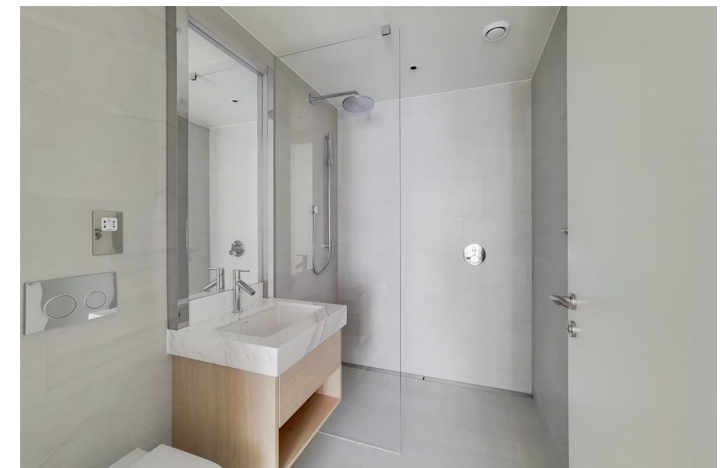
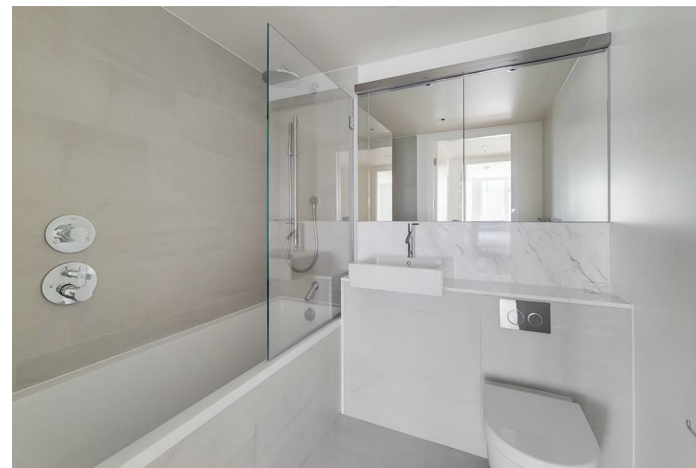
Stunning reception room, with river views, study area, open plan sitting room and kitchen, excellent storage, large master suite with dressing area and full ensuite bathroom, a further 2nd bedroom, utility room, guest WC, exceptional natural light throughout.

The development offers lift, gym, swimming pool, 24 concierge access to resident lounges the property and is situated within excellent reach to all amenities and major transport links.

## Description



## Situation

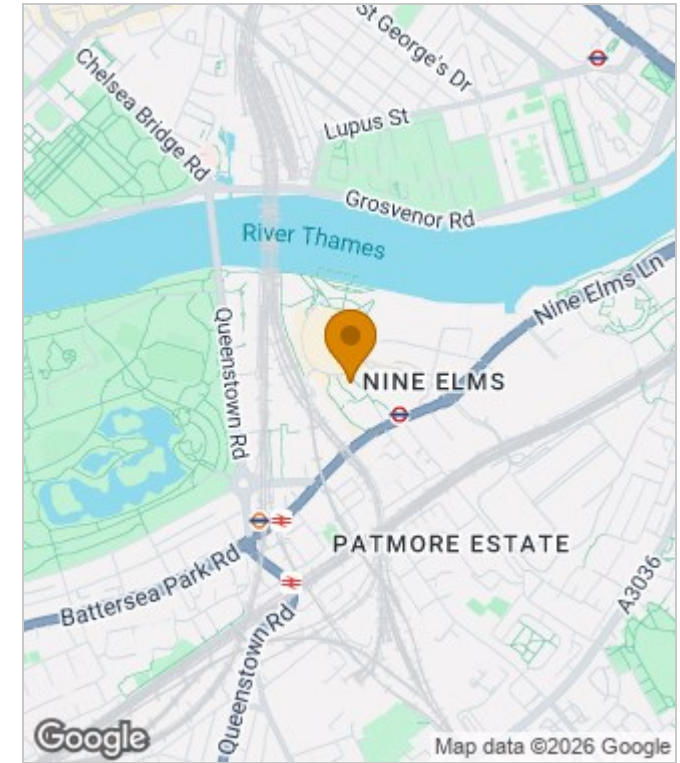


Furnished  
Council Tax Band: F  
Available: 18th August 2026

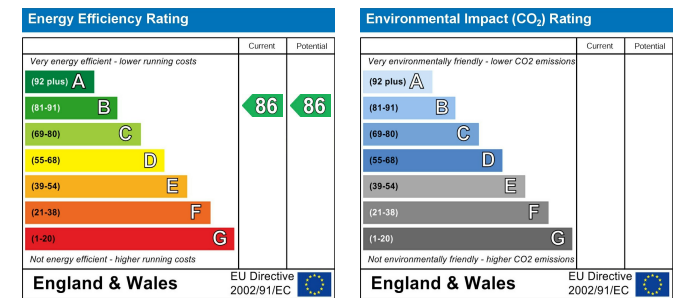
# Floor Plans



# Area Map



# Energy Performance Graph



These particulars, whilst believed to be accurate are set out as a general outline only for guidance and do not constitute any part of an offer or contract. Intending purchasers should not rely on them as statements of representation of fact, but must satisfy themselves by inspection or otherwise as to their accuracy. No person in this firm's employment has the authority to make or give any representation or warranty in respect of the property.